



LEOŠ JANÁČEK

(1854–1928)

Provozovací materiály k pronájmu Performance materials on hire

SYMPHONY ORCHESTRA

- Adagio** (1890) 5' 2(fl)p.1ci.2.2 – 2.2.2.0 – tp – archi
Schluck und Jau (1928) 12' incidental music for Gerhard Hauptmann's play
4(4flp).2ci.2clp,clb.3(cfg) – 4.3.3.1 – tp, perc (trgl, tamb picc, cpl, ptti) (3) – ar – archi, viola d'amore
- Balada blanická / The Ballad of Blaník** (1919) 8' symphonic poem
3(fl)p.2.2clb.2 – 3.3.3.1 – tp, cel, xf, perc (cpl) – 2 ar – archi
Sinfonietta (1926) 25' 4(fl)p.2ci.2(clp)clb.2 – 4.12.3.1, 2 trbb, 2 tbt – tp, perc (cpl, ptti) (1) – ar – archi
H 7741 piano reduction (František Jílek) for four hands on sale
- Dunaj / The Danube** (1923–25) 17' unfinished symphony reconstructed by Leoš Faltus and Miloš Štědroň
solo S – 4(fl)p.2ci.3(clb).2cfg – 4.0.3.1 – 4tp – ar – archi, viola d'amore
H 7950 / BA 6861 score on sale (cloth bound)
- Kozáček / Cossack Dance** (1899) 2' Russian folk dance
2flp.2.2.2 – 3.2.3.0 – tp, perc (trgl) – archi
H 4657 score on sale (Dva tance / Two Dances)
- Lašské tance / Lachian Dances** (1924) 20' six folk dances
2(fl)p.2ci.2clb.2 – 4.2.3.0 – tp, perc (cpl, cmp) (1) – ar, org – archi
BA 6845 score on sale (cloth bound)
H 6571p score on sale
H 6065 piano arrangement (Jindřich Máslo) on sale
- Moravské tance / Moravian Dances** (1889, 1891) 10' five folk dances
2(fl)p.2.2.2 – 3.2.2.0 – tp, perc (cpl) – ar – archi
- Osud / Fate** (1904) 20' suite z opery / suite from the opera (2019)
arr. by Tomáš Ille
2flp.2ci.2clb.2 – 4.2.3.1 – tp, perc (trgl, gr.cassa, tam-tam, ptti a due, ptto sosp, xil, camp)(3) – ar – archi
BA 9562-01 score of the entire opera on sale (cloth bound)
BA 9562-90 vocal score (Rasmus Baumann) of the entire opera on sale
- Příhody lišky Bystroušky / The Cunning Little Vixen** (1922–23) 18' meziaktní hudba z opery / entr'actes from the opera
arr. by František Jílek
4(2flp).2ci.2(clb).3(cfg) – 4.2.3.1 – tp, cel, xf, perc – ar – archi
H 7505 score on sale
- Putování dušičky / The Wandering of a Little Soul** (1924–28) 13' Concerto for Violin and Orchestra
reconstructed by Leoš Faltus and Miloš Štědroň
solo vn – 3(3flp,fla)flp.3(ci).3(2clp)clb.2cfg – 4.3.3.1, tbt – 3tp, cel, perc (gr. cassa, catene, ptti) (2) – ar – archi
H 7738 score on sale
H 7504 piano reduction (Leoš Faltus) on sale
- Sonáta 1. X. 1905 „Z ulice“ / Sonata 1. X. 1905 “From the Street”** (1905 / arr. 2017) 12' arr. by Vojtěch Spurný
2.2(ci).2(clb).2 – 4.3.3.1 – tp, perc (tam-tam, trgl, ptti) – ar – archi
BA 9501 original piano version on sale
- Suita op. 3 / Suite Op. 3** (1891) 14' including two folk dance arrangements
2.2.2.2 – 3.2.0.0 – tp, perc (trgl) – ar – archi
- Šumařovo dítě / The Fiddler's Child** (1913) 14' Ballad for the orchestra after the poem by Svatopluk Čech
2.2.2clb.2 – 3.2.3.1 – tp, perc (trgl, cpl, ptti) (3) – ar – archi
BA 6848 score on sale (cloth bound)
H 6798 score on sale
- Taras Bulba** (1915, rev. 1918) 24' Rhapsody for orchestra
3(fl)p.2ci.2clp.3(cfg) – 4.3.3.1 – tp, perc (trgl, tamb picc, cmp, ptti) (3) – ar, org – archi
BA 6842 score on sale (cloth bound)
H 3616 score on sale
TP 842 study score on sale
- Věc Makropulos / The Makropulos Affair** (1923–25) 21' suite z opery / suite from the opera (2022)
arr. by Tomáš Ille
2flp.2ci.2clb.2cfg – 4.2.3.1 – tp, perc (ptti, tam-t, casts, tamb picc, gr cassa) (3) – ar – archi
- Z mrtvého domu / From the House of the Dead** (1927–28) 20' suite z opery / suite from the opera
arr. by František Jílek
4(3flp).2ci.3(clp,clb).3(cfg) – 4.3.3.1, trbb(tbt) – tp, cel, xf, perc – ar – archi
H 7506 score on sale
- Žárlivost / Jealousy** (1895) 5' (Úvod k opeře Její pastorkyňa / Prelude to the opera Jenůfa) after the Moravian folk song “Žárlivec” (The Jealous Man)
2(fl)p.2ci.2clb.2 – 4.2.3.1 – tp, perc (cpl) – ar – archi

ORCHESTRA, CHOIR, SOLOISTS

Amarus (1897) 28'
cantata after the poem by Jaroslav Vrchlický (Cz, Ger, En)
solo T, Br – coro misto – 2flp.2ci.2clb.2cfg – 4.3.3.1 – tp, perc
(trgl, tam-tam, cmp) (2) – ar – archi
H 7382 score on sale
H 7735 vocal score (Zdeněk Král) on sale

Hospodine! / Lord, Have Mercy! (1896) 4'
to an old Czech hymn "Hospodine, pomiluj ny!" (Cz, Ger)
solo S, A, T, B – doppio coro misto – 3 trb, 4 trbn, tb, ar, org
H 4700 score on sale

Mša glagolskaja / Glagolská mše / Glagolitic Mass (1926–27) 40'
(**verze poslední ruky / final authorised version**)
to an old Church Slavonic text
solo S, A, T, B – coro misto – 4(3flp).2ci.3(clb).2cfg – 4.4.3.1 – tp,
cel, perc(3) – 2 ar, org – archi
H 7935 / BA 6862 score on sale (cloth bound)
TP 862 study score on sale
BA 6862-90 vocal score (Martin Zehn) on sale

Mša glagolskaja / Glagolská mše / Glagolitic Mass (1926–27) 40'
(**verze „září 1927” / “September 1927” version**)
H 8020 / BA 6863 score on sale (cloth bound)

**Mše Es dur (Nedokončená mše) / Mass in E flat major
(Unfinished Mass)** (1908) 15'
Credo completed by Vilém Petrželka
to a Latin text
solo S, A, T, B – coro misto – 2.2.2.2 – 4.3.3.1 – tp, perc (trgl, ptti)
(2) – ar – archi
H 5086 score on sale (original version with organ)

Na Soláni čarták / Čarták on Soláň (1920, 1911) 8'
cantata after the poem by M. Kurt (Cz, Ger, En)
solo T – coro maschile – 2(fl p).2ci.2.2 – 4.0.0.0 – tp, perc
(trgl, cmp)(2) – ar – archi
BA 6844 score on sale (cloth bound), both versions
(1920, 1911)
H 6450 study score on sale (version 1920)
H 2576 vocal score (Břetislav Bakala) on sale

Věčné evangelium / The Eternal Gospel (1914) 21'
cantata after the poem by Jaroslav Vrchlický (Cz, Ger, En)
solo S, T – coro misto – 3(fl p).2ci.2clb.2cfg – 4.3.3.1 – tp, perc
(trgl, ptto sosp) (1) – ar, org – archi
BA 6860 score on sale (cloth bound)
H 7736 score on sale
BA 6860-90 vocal score (Leoš Faltus) on sale

Zápisník zmizelého / The Diary of One Who Disappeared
(1917–20 / arr. 1953) 40'
arr. by Otakar Zitek
song cycle after Ozef Kalda's poems (Cz, Ger)
solo A, T – coro femminile – 2(fl p).2(ci).2(clb).2 – 4.2.3.1 – tp, perc
– ar, pf – archi
BA 9575 original version with piano on sale

Zápisník zmizelého / The Diary of One Who Disappeared
(1917–20 / arr. 2007) 40'
arr. by Miloš Štědroň and Miloš Orson Štědroň
song cycle after Ozef Kalda's poems (Cz, Ger)
solo A, T – coro femminile – 1(fl p).0.1(clp).1(cfg)
– 0.0.1.0 – tp, cel – ar – vn, vla, vc, cb
BA 9575 original version with piano on sale

CHAMBER ORCHESTRA / ENSEMBLE

Capriccio (1926) 23'
for piano left hand and wind ensemble
solo pf – fl(fl p), 2 trb, 3 trbn, tbt
BA 9535 score and parts on sale

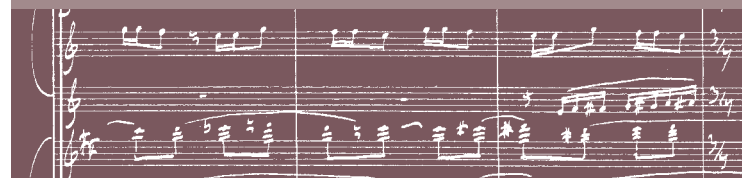
Concertino (1925) 20'
for piano and chamber ensemble
solo pf – 2 vn, vla, cl, cor, fg
H 4342 score and parts on sale

Idyla / Idyll (1878) 25'
suite / suite
archi

Srbské kolo / Serbian Reel (1900) 2'
Serbian folk dance
2 fl, 2 fg – archi
H 4657 score on sale (Dva tance / Two Dances)

Suita / Suite (1877) 19'
archi

Bärenreiter Praha



PŮJČOVNÍ KATALOG HIRE CATALOGUE

ONLINE

více než 700 děl české hudby
more than 700 works of Czech music

provozovací materiály k pronájmu
performance materials on hire



baerenreiter.cz/cs/pujcovni-katalog baerenreiter.cz/en/hire-catalogue

KONTAKTY / CONTACTS:

Bärenreiter Praha
Půjčovna provozovacích materiálů / Hire Library
Perunova 1412/10, 130 00 Praha 3, Czech Republic

phone: (+420) 274 001 925, 274 001 928
e-mail: hire@baerenreiter.cz

www.baerenreiter.cz
www.baerenreiter.com